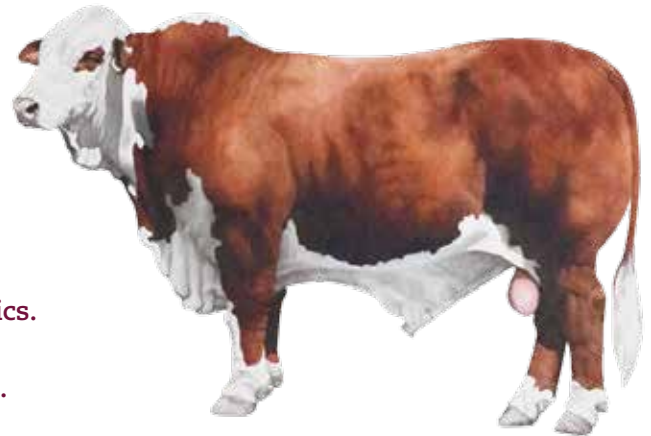




## Standard of Excellence



Braford cattle should have Brahman inheritance evident in their appearance, indicative of 1/4 - 3/4 Brahman characteristics.

Brafords are docile but alert with males appearing masculine and females feminine.

### COLOUR AND MARKINGS

Braford colour with Hereford markings, brindling and excessive freckling are a disqualification.

### DEVELOPMENT SIZE AND WEIGHT

Better than average 'weight for age' essential.

### MUSCLING

To be heavy and smooth, double muscling a disqualification.

### BONE

Bone structure sound and free of hereditary defect including twisted nose and jaw, undershot twisted nose and jaw, undershot or overshot jaw crooked front legs, post hock or sickly hocks. Long sprung pasterns and cramped hocks undesirable

### ACTION

Free and straight.

### COAT

Short and sleek.

### SKIN

Loose and pliable.

### TAIL

Tail set neatly between pin bones (high tail setting undesirable).

### HINDQUARTERS

Rump, long and full, with length between hip and pin bones, pin bones wide apart, quarters long, deep, full, muscular and slightly sloping.

### THIGH

Lower thigh well developed, twist full.

### LEGS

Legs of good bone and in proportion to the size of the beast, light bone undesirable, hind legs should be squarely placed.

### LOINS

Broad and strong back line. Hip moderately wide, not prominent, all well covered.

### RIB CAGE

Wide and well sprung from backbone, full behind the shoulders, deeply and smoothly covered with flesh.

### HORNS

Polled or dehorned.

### HEAD

Forehead broad and full.

### EARS

Medium to large size either straight or drooped.

### EYES

Eyes well shielded, red pigmentation highly desirable.

### NOSTRILS

Nostrils large, black nose undesirable.

### MUZZLE

Broad, clean face with short hair desirable.

### BRISKET

Deep and wide not wasteful.

### FLANKS

Deep and not wasteful.

### NECK

In proportion to size of body.

### DEWLAP

Loose.

### PASTERNS

Not overly long.

### FOREARM

Strong and meaty, elbows straight and not tucked in.

### SHOULDERS

Smooth and not prominent.

### HUMP

Desirable.

### HEART GIRTH

Full and deep.

### BACKLINE

Strong and wide.

### SCROTUM

Neat testicles, well proportion. Red pigmentation is desirable.

### TAIL BRUSH

To be white. This hair type indicates coat type.

### HIPS

Moderately wide, not prominent.

### SHEATH AND NAVEL

Bulls to be moderate in the sheath. Females to be large and roomy and show feminine characteristics and mothering ability. Excessive navel development is not acceptable. Sheath on bulls to be of moderate development, pendulous or excessive tightness a disqualification.